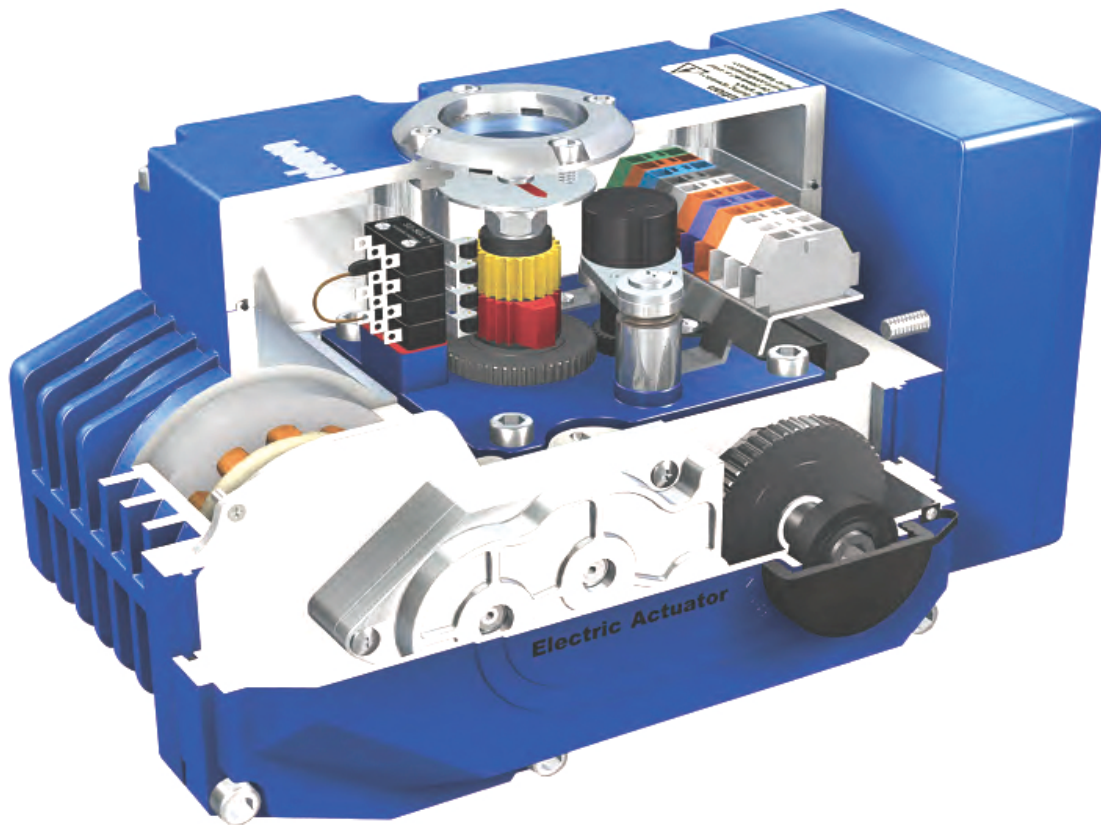


QUARTER TURN ELECTRIC ACTUATOR SERIES NC-QA



Protection level up to IP67

By improving the concave and convex structure of the upper and lower cap binding surface of the product, the sealing is more reliable.

Lens structure

The mechanical seal structure, avoid the use of chemical adhesives for site conditions due to the aging water. The improved products in full compliance outdoor use conditions, even can be used for short time immersion in water.

Transmission part is more reasonable and reliable

1. The gear box is made of aluminum alloy to avoid the cracking problem of gear box .
2. Gear with 40 chromium steel treated by finishing the two heat, It is more solid and reliable, wear resistance and fatigue resistance is stronger.

More reliable and easy to assemble with valve

Easy mounting base standard to ISO5211. The stem is directly connected to the worm inside of the actuator, the arm of valve and output shaft is shorter, output is more stable.

QUARTER TURN ELECTRIC ACTUATOR SERIES NC-QA

OVERALL DIMENSIONS AND PERFORMANCE PARAMETERS: NC5-QA
CODE: 5QA

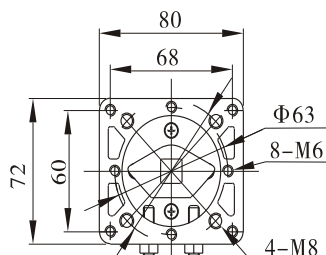
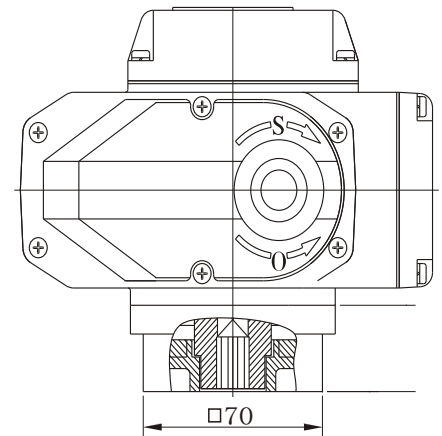
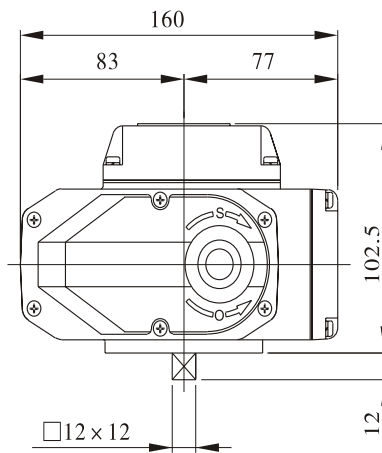
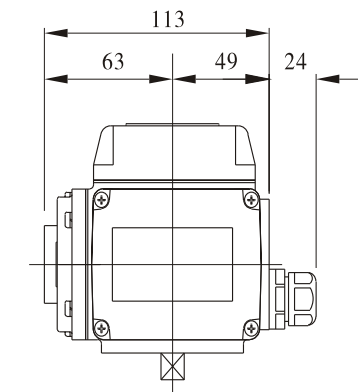


Direct Installation

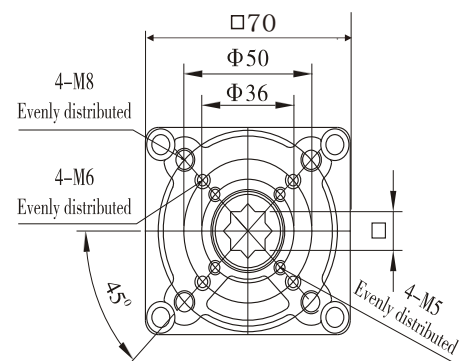
Type Performance Parameters	Power				
	DC24V	AC24V	AC110V	AC380V	AC220V
Motor Power	13W	10W	10W	6W	10W
Rated Current	1.28A	1.50A	0.24A	0.07A	0.16A
Standard Time/Torque	20S/50Nm				
Optional Time/Torque	4S/20Nm 10S/30Nm		4S/20Nm 10S/30Nm 60S/50Nm		
Turning Angle	0 ~ 360° Adjustable				
Available Control Circuit	Types of A、B、C、D、E、F、G、H				
Total Weight	2.0kg				
Insulating Resistance	DC24V/AC24V: 100MΩ/250VDC AC110V/AC220V/AC380V: 100 MΩ/500VDC				
Withstand Voltage Class	DC24V/AC24V: 500VAC 1minutes, AC110V/AC220V:1500VAC 1minutes, AC380V:1800VAC 1minutes				
Protection Class	IP67				
Installation Angle	360° at any angle				
Electric Interface	Two G1/2 Water-proof Cable Connectors, one for power line and one for signal line.				
Ambient Temperature	-30°C ~ +60°C				
Optional Function	Heater for eliminating moisture				

Standard type

Direct installation type



Parameters for direct installation	
Square	□9×9 □11×11 <input checked="" type="checkbox"/> 14×14
Flange	F03 F05 F07
Valve stem	Height ≤ 19mm



QUARTER TURN ELECTRIC ACTUATOR SERIES NC-QA

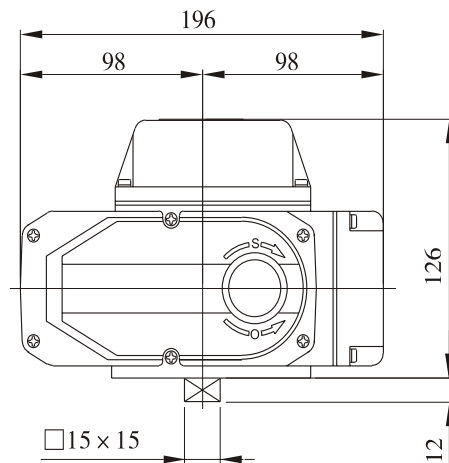
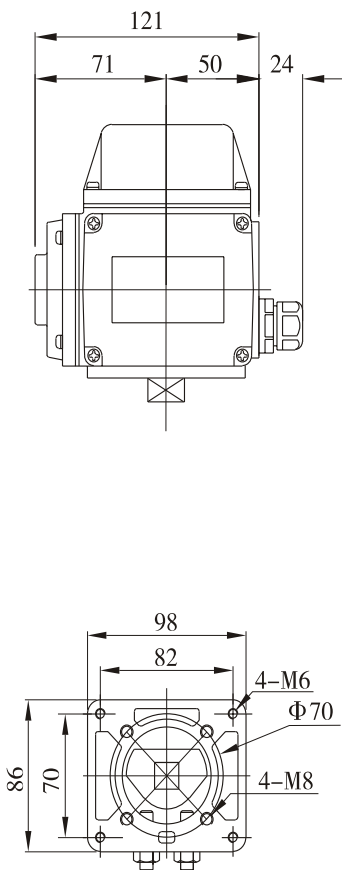
OVERALL DIMENSIONS AND PERFORMANCE PARAMETERS: NC10-QA
CODE: 10QA



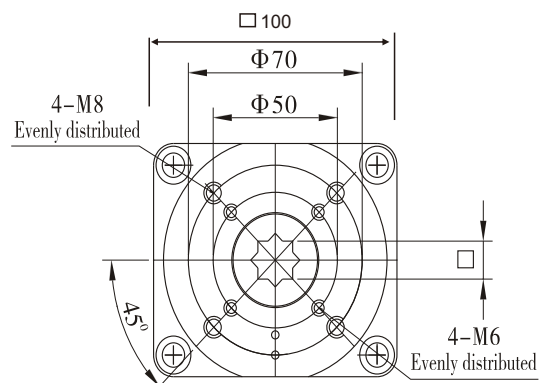
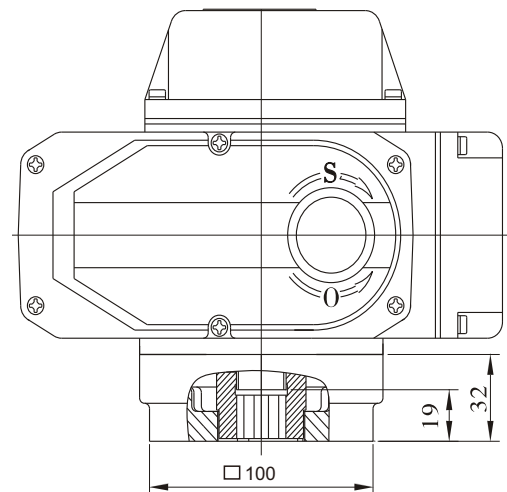
Type Performance Parameters	Power				
	DC24V	AC24V	AC110V	AC380V	AC220V
Motor Power	25W	25W	25W	15W	25W
Rated Current	2.03A	2.12A	0.57A	0.10A	0.35A
Standard Time/Torque	30S/100Nm				
Optional Time/Torque	15S/50Nm		15S/50Nm 60S/50Nm		
Turning Angle	0 ~ 90° Adjustable, 0 ~ 360° Adjustable				
Available Control Circuit	Types of A, B, C, D, E, F, G, H				
Total Weight	3.0kg				
Insulating Resistance	DC24V/AC24V: 100MΩ/250VDC AC110V/AC220V/AC380V: 100 MΩ/500VDC				
Withstand Voltage Class	DC24V/AC24V: 500VAC 1minutes, AC110V/AC220V:1500VAC 1minutes, AC380V:1800VAC 1minutes				
Protection Class	IP67				
Installation Angle	360° at any angle				
Electric Interface	Two G1/2 Water-proof Cable Connectors, one for power line and one for signal line.				
Ambient Temperature	-30°C ~ +60°C				
Optional Function	◆ Over-torque Protector ◆ Heater for eliminating moisture				

Standard type

Direct installation type



Parameters for direct installation	
Square	□ 11 × 11 □ 14 × 14 <input checked="" type="checkbox"/> 17 × 17
Flange	F05 F07 F10
Valve stem	Height ≤ 19mm



QUARTER TURN ELECTRIC ACTUATOR SERIES NC-QA

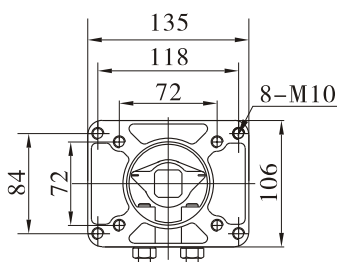
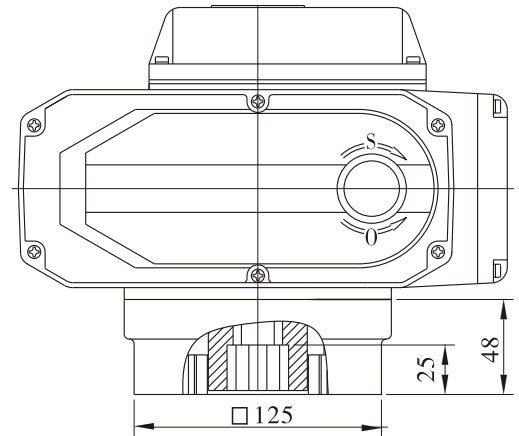
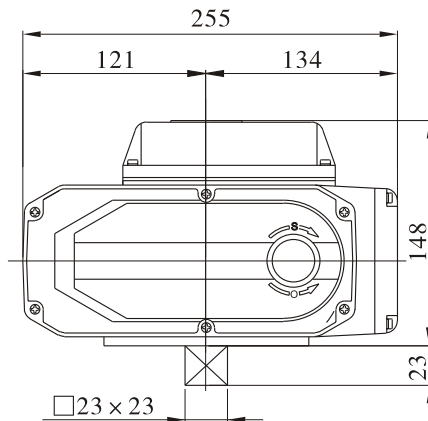
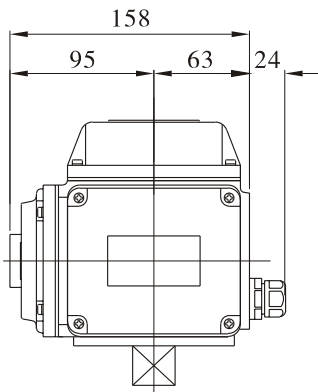
OVERALL DIMENSIONS AND PERFORMANCE PARAMETERS: NC20-QA-60QA
CODE: 20-60QA



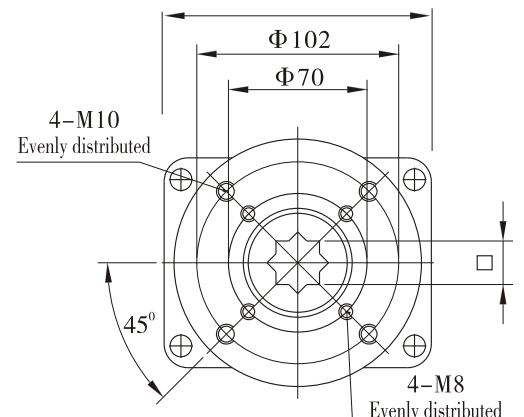
Type Power Performance Parameters	NC20-QA				NC40-QA				NC60-QA			
	DC24V	AC110V	AC380V	AC220V	DC24V	AC110V	AC380V	AC220V	DC24V	AC110V	AC380V	AC220V
Motor Power	35W	40W	30W	40W	70W	90W	40W	90W	70W	90W	40W	90W
Rated Current	3.57A	0.65A	0.15A	0.37A	5.13A	1.12A	0.29A	0.57A	6.04A	1.18A	0.29A	0.60A
Standard Time/Torque	30S/200Nm				30S/400Nm				45S/600Nm			
Optional Time/Torque	15S/100Nm		15S/100Nm 60S/200Nm		15S/100Nm		15S/100Nm 60S/200Nm					
Turning Angle	0 ~ 90° Adjustable											
Available Control Circuit	Types of A, B, C, D, E, F, G, H											
Total Weight	8.0kg				8.5kg				9.0kg			
Insulating Resistance	DC24V/AC24V: 100MΩ/250VDC AC110V/AC220V/AC380V: 100 MΩ/500VDC											
Withstand Voltage Class	DC24V/AC24V: 500VAC 1minutes, AC110V/AC220V:1500VAC 1minutes, AC380V:1800VAC 1minutes											
Protection Class	Ip67											
Installation Angle	360° at any angle											
Electric Interface	Two G1/2 Water-proof Cable Connectors, one for power line and one for signal line.											
Ambient Temperature	-30°C ~ +60°C											
Optional Function	◆Over-torque Protector ◆ Heater for eliminating moisture											

Standard type

Direct installation type



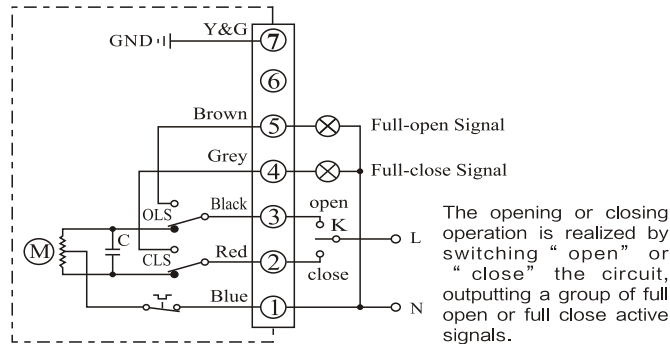
Parameters for direct installation		
	DCL-20	DCL-40/60
Square	□14×14 □17×17	□17×17 or □22×22
Flange	F07 F10	
Valve stem	Height ≤ 25mm	



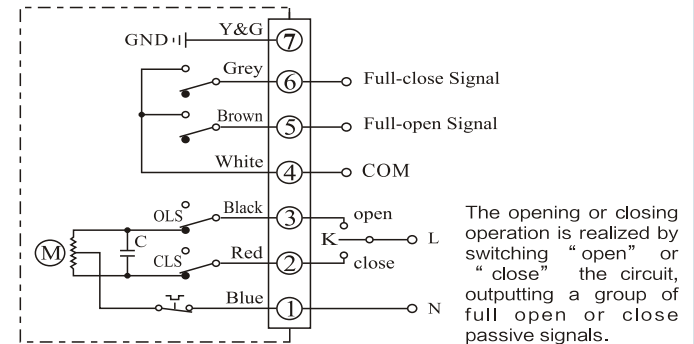
QUARTER TURN ELECTRIC ACTUATOR SERIES NC-QA

Control Circuit

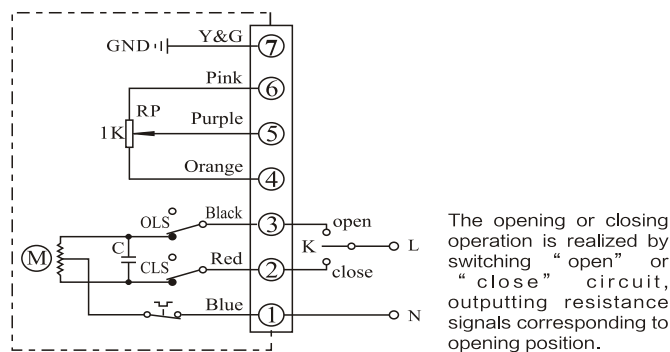
Type A: With Limit Position Switch (Active Contact)



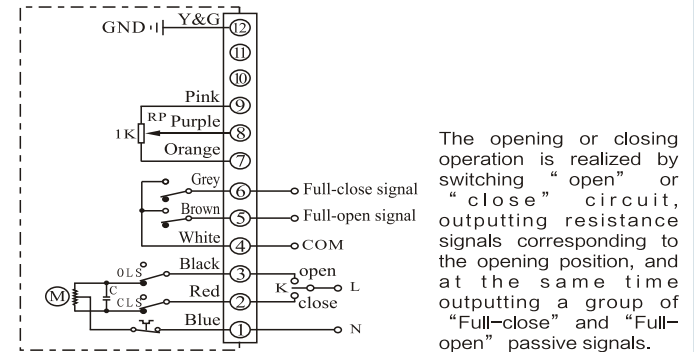
Type B: Switch with Middle Position (Passive Contact)



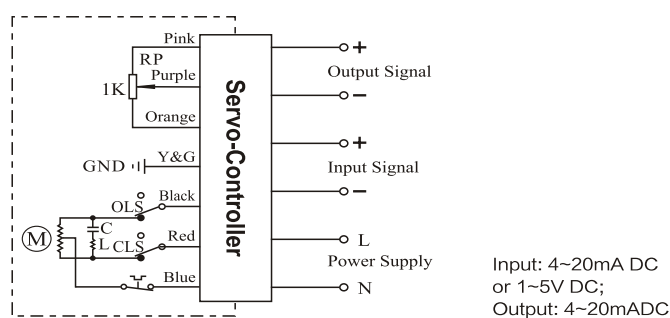
Type C: With 1KΩ (or 500Ω) Potentiometer



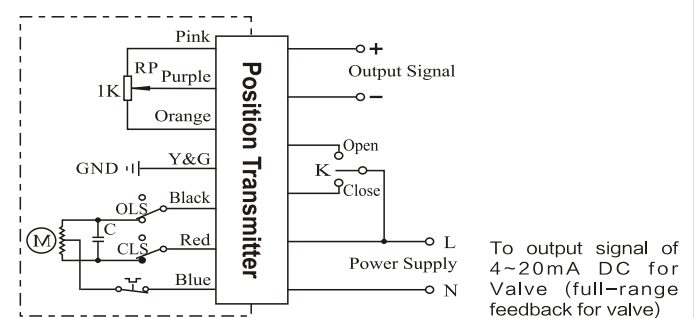
Type D: Position Switch with Potentiometer and Passive Contact



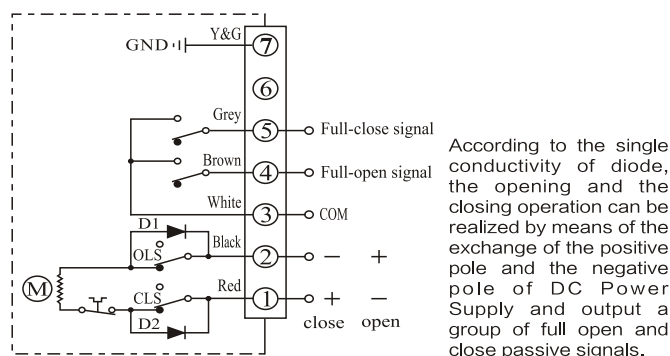
Type E: With Servo Controller (Adjusting Type)



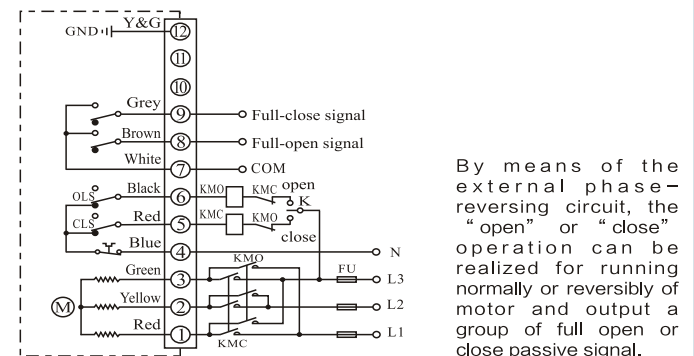
Type F: With Position Transmitter



Type G: DC Control Circuit with Passive Contact Switch



Type H: 3-phase AC Control Circuit with Passive Contact Switch



Note: The internal circuit of actuator is shown in the dotted frame. The circuit out of the dotted frame is for reference of customers.